

让世界的包装因揽德更美好

Make the world's packaging be better because LANDPACK

LANDPACK
揽德包装机械

MESH BAG PACKAGING MACHINE CATALOG

网袋机画册



中文官网



English Web

佛山市揽德包装机械有限公司

FOSHAN LAND PACKAGING MACHINERY CO.,LTD

地址：广东省佛山市南海区狮山镇下柏第一工业区吉祥路8号智晟科技产业园

Add: Zhisheng Technology Industrial Park, No. 8 Jixiang Road, Xiabai First Industrial Zone, Shishan Town, Nanhai District, Foshan, Guangdong, China

Tel: 0757-81807872 Fax: 0757-81807758

网址: www.landpack.cn Web: www.landpack.com

E-mail: yang@landpacking.com



佛山市揽德包装机械有限公司

FOSHAN LAND PACKAGING MACHINERY CO.,LTD



Sales Marketing And Technical Services

营销和技术服务



200+
Industry packaging solution cases
every year

100%
After-sales technical service support



LandPack Exhibitions

揽德展会





Technical strength

技术实力



CE 认证



CE 认证



CE 认证



RoHS 证书



TUV 认证



ISO 认证



SGS 认证



专利证书



专利证书



专利证书



专利证书



专利证书



专利证书



专利证书



专利证书

About LandPack

关于揽德

Foshan Land Packaging Machinery Co., Ltd. is located in Foshan, Guangdong Province, within a one-hour drive from Guangzhou Airport and just 20 minutes from Foshan High-Speed Railway Station. Established in 2017, the company is a high-tech enterprise integrating R&D, manufacturing, sales, and service. With a modern factory covering 30,000 square meters, Landpack is equipped with a team of senior engineers, installation and commissioning technicians, and marketing & after-sales service professionals. With over 130 employees, we provide customers with professional products and reliable service support.

Since its establishment, Landpack has been dedicated to the R&D and manufacturing of vertical form fill seal machines, filling machines, premade pouch packaging machines, multi lane packaging machines, flow pack machines, and feeding and packaging lines. Our products are widely applied in industries such as snacks food and health supplements, pet food, daily chemical products, fresh produce, sauces, and powders, offering customized and complete packaging solutions for enterprises.

Our products have obtained lots of national patent certificates, ISO9001 Quality Management System certification, as well as CE, TUV, SGS, and FDA approvals. They are exported to more than 100 countries and regions worldwide, receiving wide recognition and praise from customers.

At Landpack, we are committed to continuously refining and optimizing our products to deliver intelligent packaging equipment that is efficient, stable, safe, and beautiful packaging—striving to go beyond expectations and make the world a better place with Landpack Packaging.

佛山市揽德包装机械有限公司坐落于广东省佛山市，位于广州机场一小时，佛山动车站二十分钟交通圈。公司成立于2017年，是一家集研发、制造、销售及服务于一体的高新技术企业，配备三万平米现代化厂房，拥有骨干工程师，安装调试技术员团队和营销与售后技术服务团队，员工规模达130人，为客户提供专业的产品和优质的服务保障。

我司自成立以来，专注于研发和制造立式包装机、灌装机、给袋式包装机、多列机和枕式机、理料线包装设备，产品广泛用于休闲零食食品、食品保健品，宠物食品，日用化工用品，果蔬生鲜，酱料和粉剂等行业，致力为企业客户定制和提供整体包装解决方案。

产品已获多个国家技术专利证书，并通过ISO9001质量管理体系认证，获欧盟CE、TUV、SGS、FDA认证。产品远销海外一百多个国家和地区，受到企业客户广泛好评和认可。

揽德人将持续深耕和优化产品，为客户提供高效、稳定、安全、包装美观的智能包装设备，并力求超越，让世界因揽德包装而更美好。



Development History of LandPack

揽德发展历程

2017-2018

Established 成立

LANDPACK brand was established, independently developed and manufactured vertical machines and pillow machines, obtained ISO9001 quality management system certification, EU CE, TUV, SGS, FDA certification, and its products were exported to more than 60 countries and regions, and has been widely praised and recognized by corporate customers.

LANDPACK揽德品牌建立，自主研发生产制造立式机和枕式机，获ISO9001质量管理体系认证，欧盟CE，TUV，SGS，FDA认证，产品远销六十多个国家和地区，受到企业客户广泛好评和认可。

2019-2024

Expansion 壮大

The Landpack's factory has expanded to 10,000 square meters, establishing dedicated departments for premade pouch machines, multilane packaging machines, and filling machines, along with a supporting machining center. The team has grown with the addition of senior engineers, experienced installation and commissioning technicians, as well as marketing and after-sales professionals, bringing the workforce to 140 employees. Our sales team has actively promoted the LANDPACK brand by participating in major exhibitions in Germany, Thailand, and across China, including Shanghai and Qingdao. Drawing on deep expertise in packaging solutions for snacks, pet food, daily chemical products, health supplements, and pharmaceuticals, the company delivers over 180 customized full-line packaging solutions annually, achieving a turnover of 80 million RMB.

厂房规模扩大至一万平方米，建立给袋机产品部门，多列机产品部门和灌装机产品部门，并建立配套机加工中心，新增多名骨干工程师，资深安装调试技术员，营销和售后技术人员，员工规模达140人，继销售团队参加海外德国展、泰国展，及国内上海、青岛等多个展会进行品牌营销。结合公司团队深耕积累休闲零食食品，宠物食品，日用化工，保健品药品行业包装技术方案经验。一年为客户定制提供180多个整线包装方案，公司营业额达8000万。

2025-NOW

Development 发展

After thorough preparation, the company officially relocated from its 10,000m² old factory to a new 30,000m² modern plant. The expanded space accommodates more production lines and R&D areas, not only meeting the growing demand for capacity but also providing employees with an enhanced working environment. This relocation marks more than a physical upgrade—it represents a new milestone for high-quality development, empowering LANDPACK to serve customers with stronger capabilities and move forward with greater momentum.

历经筹备，公司正式从1万方旧厂房，乔迁至3万方新址！新厂房空间扩容，可承载更多生产线与研发区域，既解产能增长之需，也为员工提供更优环境。这不仅是物理空间的升级，更是公司迈向高质量发展的新起点。未来将以更强实力服务客户、聚力前行。



MEASUREMENT OPTIONS

- The whole machine uses hard carbon steel and stainless steel, ensuring safety, hygiene and enhanced corrosion resistance.
- Automatic replacement of empty packaging nets.
- Equipped with stable Airtac pneumatic components for long service life.
- Two positioning gears and proximity switches ensure precise net pushing.
- Reliable LS inverters, Schneider PLC and touch screen for easy operation and control.
- Standardized packaging size.
- Quick and easy replacement of packaging ties.
- User-friendly, simple operation interface.

LD-DCF-1 网袋包装机 MESH BAG PACKAGING MACHINE

Horizontal clipping machine can automatically close tubular nets containing delicate fruit and vegetable products: apples, tomatoes, eggplants, cucumbers, etc. Uses metal strap to clip the extruded or woven net. Wine-glass label can be inserted to the end of package with printing including text, date, logo, barcode to improve the image of your products. Also tape can be clipped into the end and end of the net as a handle.

Ideal for:



Technical data

Items that can be packed	0.3kg
Minimum packing weight	5kg
Maximum packing weight	380/400mm
Mesh bag perimeter	200mm
Net installation length	25-40bag/min
Packaging rate	450kg



MEASUREMENT OPTIONS

- The whole machine uses hard carbon steel and stainless steel, ensuring safety, hygiene and enhanced corrosion resistance.
- Automatic replacement of empty packaging nets.
- Equipped with stable Airtac pneumatic components for long service life.
- Two positioning gears and proximity switches ensure precise net pushing.
- Reliable LS inverters, Schneider PLC and touch screen for easy operation and control.
- Standardized packaging size.
- Quick and easy replacement of packaging ties.
- User-friendly, simple operation interface.

LD-DCF-2 卧式网袋包装机 HORIZONTAL MESH BAG PACKAGING MACHINE

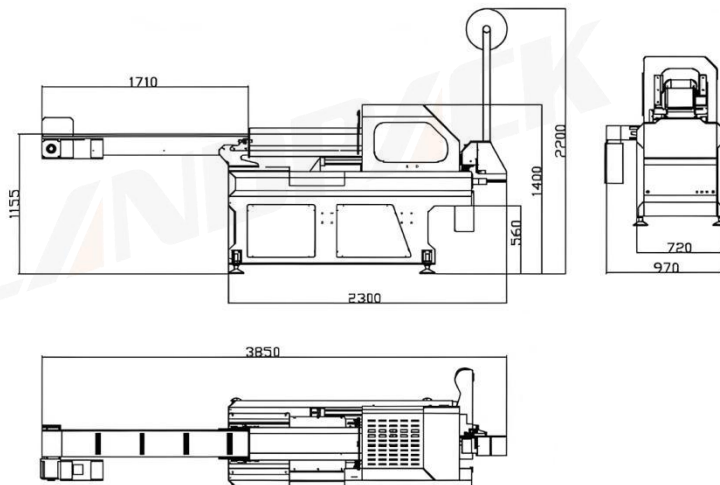
Horizontal clipping machine can automatically close tubular nets containing delicate fruit and vegetable products: apples, tomatoes, eggplants, cucumbers, etc. Uses metal strap to clip the extruded or woven net. Wine-glass label can be inserted to the end of package with printing including text, date, logo, barcode to improve the image of your products. Also tape can be clipped into the end and end of the net as a handle.

Ideal for:



Technical data

Items that can be packed	0.3kg
Minimum packing weight	5kg
Maximum packing weight	380/400mm
Mesh bag perimeter	200mm
Net installation length	25-40bag/min
Packaging rate	450kg



LD-DCF-3 卧式网袋包装机 HORIZONTAL CLIPPING MACHINE

Horizontal clipping machine can automatically close tubular nets containing delicate fruit and vegetable products: apples, tomatoes, eggplants, cucumbers, etc. Uses metal straps to clip the extruded or woven net. Wine-glass label can be inserted to the end of package with printing including text, date, logo, barcode to improve the image of your products. Also tape can be clipped into the end and end of the net as a handle.

Ideal for:



Technical data

Voltage	Single phase 220v
Frequency	50Hz/60Hz
Installed power	2 Kw
Air consumption	240 L/min. 6 bar
Weight	450KG



LD-CDF-4 立式网袋包装机 AUTO-CLIPPING MACHINE

FEATURES

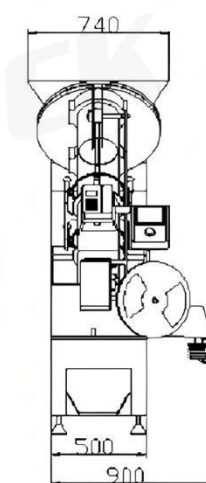
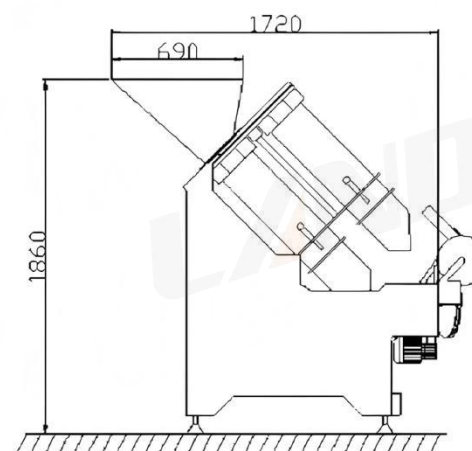
Clipper specially designed for netting fruits and vegetables such as oranges, mandarins, lemons, grapefruits, potatoes, onions, tomatoes, peppers.

Among its numerous advantages, we must point out the following ones:

- Possibility of an automatic change of tube, controlled only by one motor (Operating mode selection).
- Net extraction through a sliding system with two speeds: a slow one for making the pack and a fast one for getting back the remaining net and returning to the start position.
- Very regular pack size
- One-use strip band cassette which can be easily and rapidly changed
- Control panel with easy and friendly use

Technical data

Output	Up to 35 bpm (depending on the product and size of the bag)
Voltage	Single phase 220
Frequency	50/60Hz
Installed power	2.9Kw
Min air pressure	6 bar
Average air consumption	100L/min
Weight	425 Kg



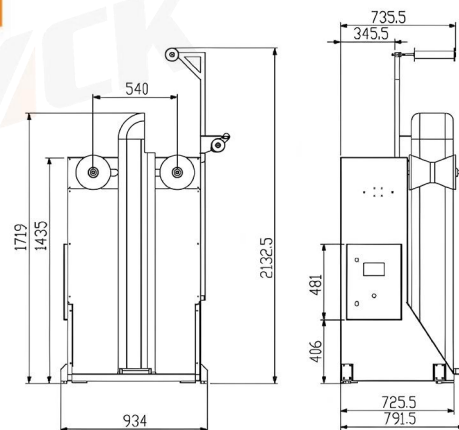


LDS-2 双扫辊套网机 MESH FEEDER

DESCRIPTIONS

Their action complements that of the packing and clipping machines. Their purpose is to pre-load tubular woven and extruded net onto the packaging tubes.

- Power supply: 220V/AC 50Hz single phase
- Installed power: 0.75Kw
- Air pressures: 0.15Mpa



LDG-3 滚筒套网机 MESH FEEDER

DESCRIPTIONS

The mesh feeder is a machine which loads tubular net into accessories for packaging machines. When the loading process is begun, the rubber roller moves toward the netting tube and when it makes contact, it begins feeding. The dual rubber rollers will rise up slowly accompany with the mesh feeding to protect the mesh well.

Technical Characteristics

- Power supply: 220v/ac 50hz single phase
- Installed power: 0.75kw
- Speed: adjustable
- Air pressures: 0.12mpa



LDB-1 半自动网袋机 Semi-Auto clipping machine

Optionally available: Filling device, nettube, Printer for label

Standard equipment:

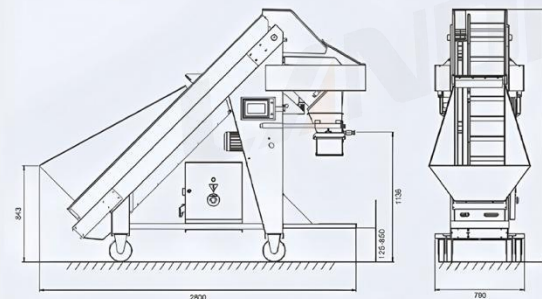
- PLC and HMI system for easy operation and be more intuitive
- Multi language for different area user
- Supports for clip material and labelling ribbon
- Completely electric and mechanical control system without any air consumption
- Label device equipped with step motor for more stable motion



Technical Parameters	
Dimensions(Length × Width × Height)	850mm × 600mm × 1200mm
Height of Working Table	680mm
Power source	220V, 50/60Hz
Electric power	0.75Kw
Clip Specification	Length per clip: 18 mm/20mm
	Width: 5mm
	Thickness: 0.3-0.4mm
Speed	15/20pack/min



LD-50-01 称重输送机 AUTO-DOSER



Auto-Doser AD 50-01 are designed for dosing of agricultural products (potatoes, onion etc) into knitted sleeves, box pallets, bags or cases. The material shall be cleaned and sorted out for the operation to be smooth and trouble free. The minimum size of fruits is 20mm, the maximum size of fruits is 120mm, the average effective volume of the hopper in which a dose is weighed is 70 dm³ (this corresponds to 50 kg of potatoes of size of ca. 70 to 90 mm). The weight of a dose can be adjusted by 0.01kg in the range of 5 to 50kg. The device can work as a last stage of an after-harvest assorting line, Or it can work alone. One person is sufficient for its operation.



LDFC-1 果蔬计数输送机 FRUITCOUNTER

FEATURES

Automatic machine suitable for the counting fruit with a precise number. It can be used together with other types of machine(e.g. Auto-clipping machine ,etc). the fruit is transported by rollers specially shaped ,that simultaneously perform a rotation on themselves ,so the fruit rotate as well. Suitable to process products as: garlic, onions, citrus fruit, lime, tomatoes, avocados, and all products predominantly spherical in shape.

Detail

- Standard pitch: Φ min 40 mm; Φ max 80mm
- Touch screen for easy and friendly operation
- Variable speed
- Servo motor driving system
- Shaking hopper equipped with motor

